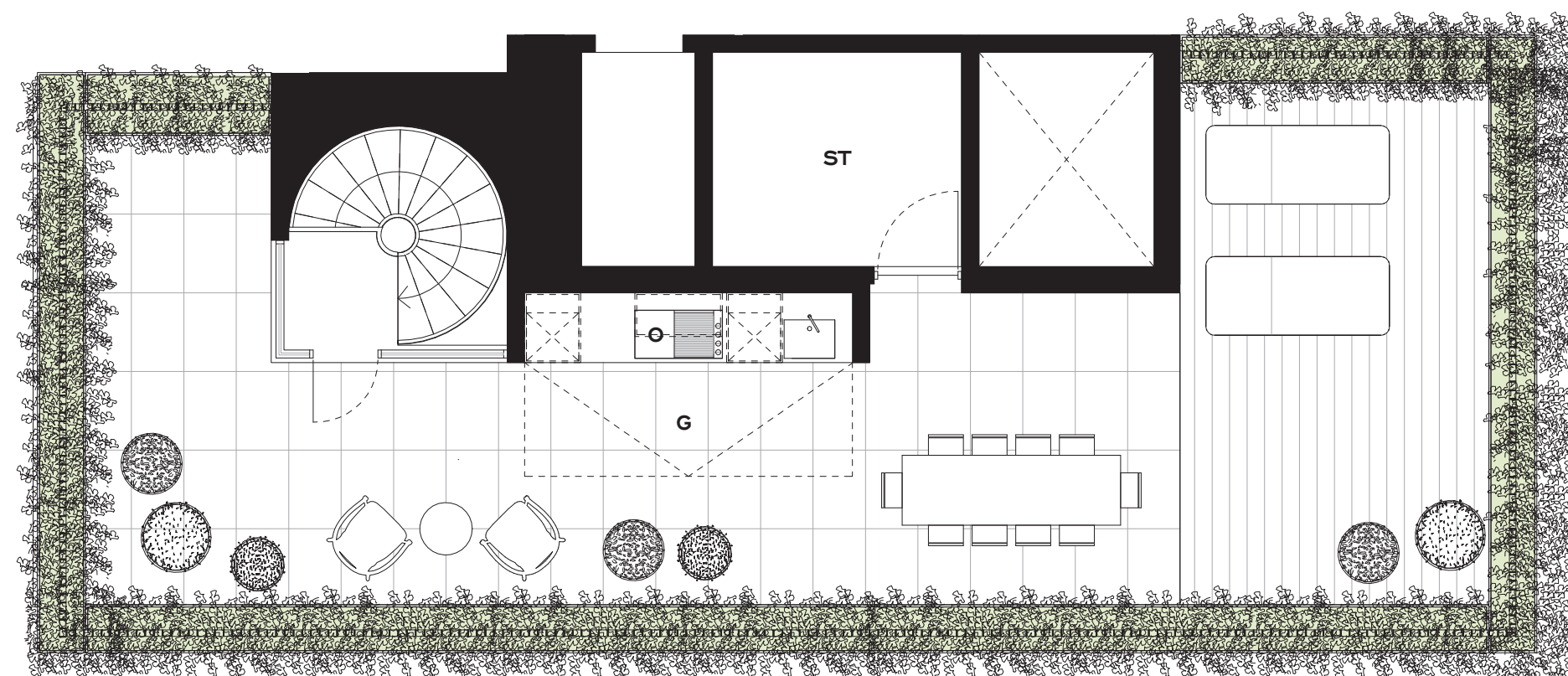
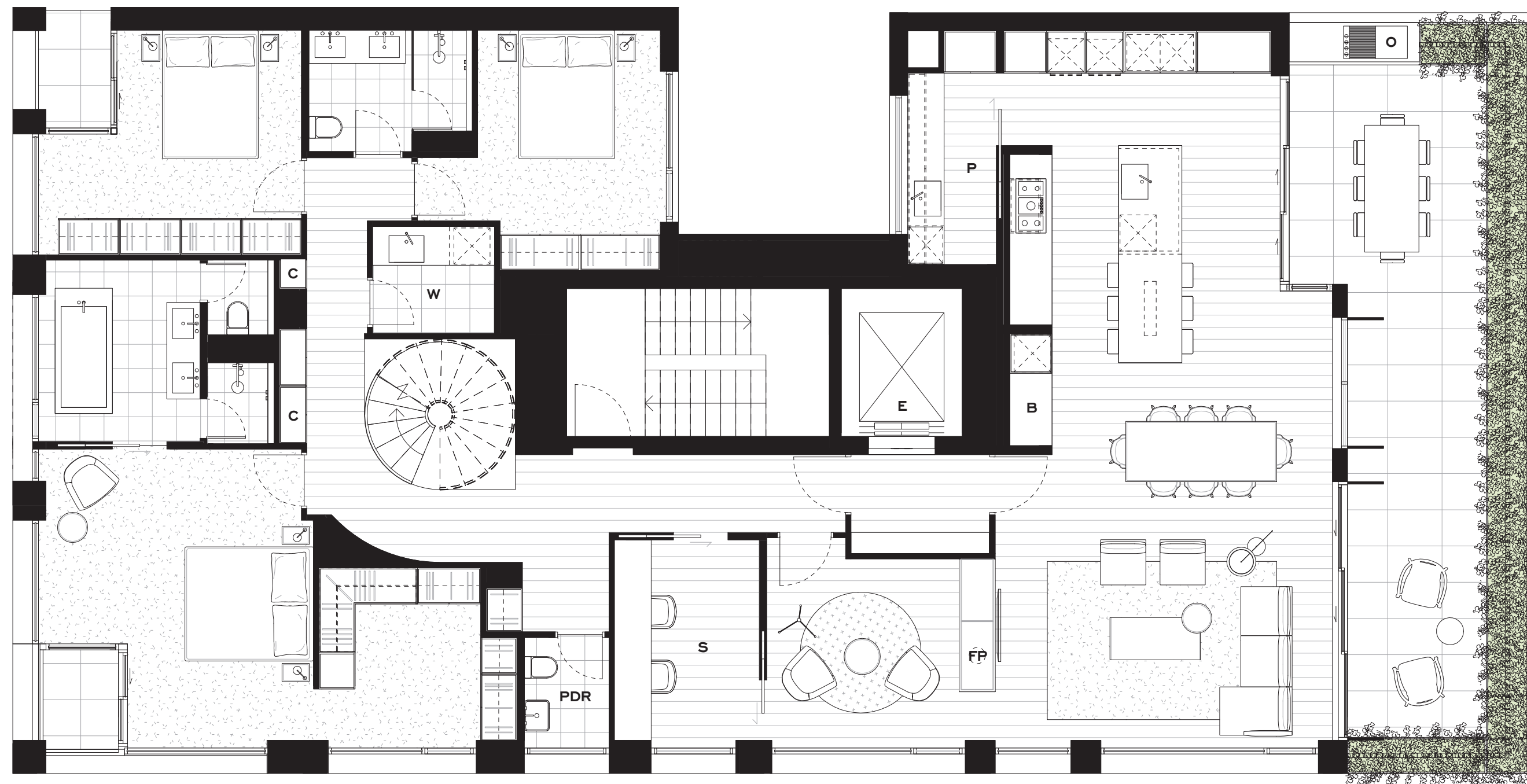


MALOURA N°1

CNR. MALVERN & MATHOURA, TOORAK



Level Four Residence 4.01

INTERNAL	231 M ²
TERRACE	47M ²
ROOFTOP	87M ²
TOTAL	365M ²

- 3 BEDROOM
- 2 BATHROOM
- 4 CAR PARK

- PDR POWDER ROOM
- W LAUNDRY
- S STUDY / BEDROOM
- FP FIREPLACE
- B BAR
- P PANTRY
- C CUPBOARD
- O OUTDOOR BBQ
- E ELEVATOR
- G GLAZED TILT DOOR
- ST STORE ROOM

